

Transport for NSW
Ref: 3724.4

LIGHTING IMPACT ASSESSMENT
EXTERNALLY ILLUMINATED SIGNAGE AT
CLUNIES ROSS ST, PROSPECT NSW

Electrolight Australia
ABN: 44 600 067 392

australia@electrolight.com
www.electrolight.com

4/414 Bourke St
Surry Hills, NSW 2010

T + 61 2 9267 4777

DATE	REV	COMMENT	PREPARED BY	CHECKED BY
19/11/24	REV B	For Information	CB	RS

CONTENTS

1. INTRODUCTION	3
2. DEFINITIONS	3
3. SITE DESCRIPTION AND SCOPE	4
4. DESIGN GUIDELINES AND STANDARDS	5
5. LUMINANCE ASSESSMENT	6
6. AS4282 ASSESSMENT	8
7. SEPP ASSESSMENT	11
8. SUMMARY	12
9. DESIGN CERTIFICATION	13
APPENDIX A	14
APPENDIX B	17
APPENDIX C	19
APPENDIX D	27

1. INTRODUCTION

Electrolight have been appointed by the Transport for NSW to undertake a Lighting Impact Assessment on the existing signage floodlighting at Clunies Ross St, Prospect NSW (**existing signage lighting**). The objective of the assessment is to report on compliance with the State Environmental Planning Policy (Industry and Employment) 2021, NSW Transport Corridor Outdoor Advertising and Signage Guidelines, and AS/NZS 4282:2023 Control of the Obtrusive Effects of Outdoor Lighting.

2. DEFINITIONS

2.1 Illuminance

The physical measure of illumination is illuminance. It is the luminous flux arriving at a surface divided by the area of the illuminated surface. Unit: lux (lx); $1 \text{ lx} = 1 \text{ lm/m}^2$.

- (a) Horizontal illuminance (E_h) The value of illuminance on a designated horizontal plane
- (b) Vertical illuminance (E_v) The value of illuminance on a designated vertical plane

Where the vertical illuminance is considered in the situation of potentially obtrusive light at a property boundary it can be referred to as environmental vertical illuminance (E_{ve}).

2.2 Luminance

The physical quantity corresponding to the brightness of a surface (e.g. a lamp, luminaire or reflecting material such as the road surface) when viewed from a specified direction. SI Unit: candela per square metre (cd/m^2) – also referred to as “nits”.

2.3 Luminous Intensity

The concentration of luminous flux (perceived light power) emitted in a specified direction. Unit: candela (cd).

2.4 Dynamic content

Where the luminous image, pattern, colour or direction of light changes over an interval of less than 60 seconds.

Note: Definition source is AS4282.

2.5 Obtrusive Light

Spill light which, because of quantitative or directional attributes, gives rise to annoyance, discomfort, distraction, or a reduction in ability to see essential information such as transport signals.

Note: Obtrusive light includes the impact on humans and environmental receivers.

2.6 Threshold Increment

The measure of disability glare expressed as the percentage increase in luminance contrast threshold required between an object and its background for it to be seen equally well with a source of glare present.

Note: The required value is a maximum for compliance of the lighting scheme.

2.7 Environmentally Sensitive Area (ESA)

Area of ecological value including, bushland, waterways and marine and coastal areas.

Note: Definition source is AS4282.

2.8 AGI32 Light Simulation Software

AGI32 (by U.S. company Lighting Analysts/Revalize) is an industry standard lighting simulation software package that can accurately model and predict the amount of light reaching a designated surface or workplane. AGI32 has been independently tested against the International Commission On Illumination (CIE) benchmark, CIE 171:2006, Test Cases to Assess the Accuracy of Lighting Computer Programs.

2.9 Upward Light Ratio Luminaire (ULR_L)

The ratio of the luminous flux of a luminaire that is emitted, at and above the horizontal, divided by the total luminaire flux when the luminaire is mounted in its designed position, and excluding reflected light from surfaces or obstructions.

Note: Definition source is AS4282.

2.10 Environmental Receiver

Any identified living species (plants, animals and other organisms) and their locations indicated, that may be impacted by the existing lighting system.

Note: Definition source is AS4282.

3. SITE DESCRIPTION AND SCOPE

The existing pylon-mounted signage is located along the M4 Western Motorway near Clunies Ross St. The signage is oriented towards the outbound direction of traffic on the M4. The total area of the signage is 42.41 m². Refer to Appendix A for the signage location plan and elevations.

The signage is illuminated using three 100W LED floodlights mounted on bracket arms located 1m above and 1.8m out from the sign face. Refer Appendix B for further luminaire specification details. The luminaires are aimed towards the signage face at 25 degrees from horizontal*. The existing signage lighting operates all night and is switched off during the day. The existing signage lighting is not dimmable.

The existing signage lighting shall be fitted with custom baffles which mitigate upward waste light, resulting in an Upward Light Ratio (ULR_L) of not more than 0.03*, as stated in AS/NZS 4282:2023 Control of the Obtrusive Effects of Outdoor Lighting - refer Appendix D for details.

Environmental impact assessments, including the management of artificial light for the protection of specific entities protected by environmental legislation, is beyond the scope of this assessment.

*In order to comply with the standards outlined in this report, the floodlights are to be aimed towards the signage face at 25 degrees from the horizontal.

*The signage supplier and/or operator is responsible for complying with the Upward Light Ratio. Electrolight take no responsibility for compliance with this requirement.

4. DESIGN GUIDELINES AND STANDARDS

The Lighting Impact Assessment will review the existing signage lighting against the following Criteria, Design Guidelines and Standards.

- State Environmental Planning Policy (Industry and Employment) 2021 (**SEPP Industry and Employment**)
- Transport Corridor Outdoor Advertising & Signage Guidelines 2017 (**Transport Guidelines**)
- AS/NZS 4282:2023 Control of the Obtrusive Effects of Outdoor Lighting (**AS4282**)

5. LUMINANCE ASSESSMENT

The maximum permissible night time luminance of the existing signage is determined by the existing lighting and land use zoning environment of its surroundings. AS4282 outlines maximum average luminances for different Environmental Zones as shown in Table 1 below:

TABLE 1 - AS4282 MAXIMUM AVERAGE NIGHT TIME LUMINANCE FOR SIGNAGE		
	Description	Max Average Luminance (cd/m ²)
A4	High district brightness e.g. Town and city centres and other commercial areas, residential areas abutting commercial areas, industrial and Port areas and Transport Interchanges	350
A3	Medium district brightness e.g. Suburban areas in towns and cities, generally roadways with streetlighting through suburban, rural or semi-rural areas	250
A2	Low district brightness e.g. Sparsely inhabited rural and semi-rural areas, generally roadways without streetlighting through suburban, rural or semi-rural areas other than intersections	150
A1	Dark e.g. Relatively uninhabited rural areas (including terrestrial, marine, aquatic and coastal areas), generally roadways without streetlighting through rural areas	50
A0	Intrinsically Dark e.g. UNESCO Starlight Reserve, IDA: Dark Sky Parks, Reserves or Sanctuaries, major optical observatories, other accreditations for dark sky places for example astrotourism, heritage value, astronomical importance, wildlife/ecosystem protection, lighting for safe access may be required	0.1

Based on an assessment of the surrounding environment, the existing signage is located within Environmental Zone A2 under AS4282, therefore, the maximum night time luminance is 150cd/m².

AS4282 does not include limits for daytime operation of illuminated signage. However, the Transport Guidelines outlines maximum permissible luminance limits for various lighting conditions, including daytime. Under the Transport Guidelines, the existing signage is classified as being within a Zone 4 area, which is described as an area with generally low levels of offstreet ambient lighting e.g. most rural areas, or areas that have residential properties nearby. The maximum luminance limits of illuminated signage within Zone 4 with an area greater than 10m² are: 400cd/m² for daytime and 100cd/m² for night time (night time values are taken to be 1/4 the daytime brightness as outlined in the previous revision of the Transport Guidelines).

Table 2 below outlines the maximum luminance levels to comply with AS4282 and the Transport Guidelines for the various lighting conditions listed below:

TABLE 2 - LUMINANCE LEVELS FOR EXTERNALLY ILLUMINATED ADVERTISEMENTS		
Lighting Condition	Max Permissible Luminance (cd/m ²)	Compliant
Day	N/A (OFF)	✓
Night Time	100	✓

The luminance of the existing signage was calculated using lighting software AGI32. Photometric data for the luminaires was based off a floodlight from the same manufacturer that has similar performance characteristics as the existing fittings,* and was used for calculation purposes. The average luminance of the signage was found to be 56 cd/m2 - refer Table 3 below. The calculated luminances are less than the maximum limit of 100 cd/m2. The existing signage lighting therefore complies with the luminance limits outlined in AS4282 and the Transport Guidelines. For further lighting requirements, refer to Section 6.

TABLE 3 - MAX LUMINANCE LEVELS FOR EXTERNALLY ILLUMINATED ADVERTISEMENTS		
Lighting Condition	Max Permissible Luminance (cd/m2)	Compliant
Day	N/A (OFF)	✓
Night Time	56	✓

*Electrolight takes no responsibility for the accuracy of third party provided photometric data.

6. AS4282 ASSESSMENT

The existing signage lighting has been assessed against the lighting criteria and requirements outlined in AS4282.

AS4282 provides limits for different obtrusive factors associated with dark hours (night time) operation of outdoor lighting systems. Two sets of limiting values for spill light are given based on whether the lighting is operating before a curfew (known as “pre-curfew” operation) or operating after a curfew (known as post-curfew or curfewed operation). Pre-curfew spill lighting limits are higher than post-curfew values, on the understanding that spill light is more obtrusive late at night when residents are trying to sleep. Under AS4282, the post-curfew period is taken to be between 11pm and 6am daily. As the signage operates all night, it will be assessed against the more stringent post-curfew limits.

Spill light to any adjacent Environmentally Sensitive Areas are also assessed against the more stringent post-curfew limits, as outlined in Clause 3.2.1 of AS4282.

Illuminance Assessment

The AS4282 assessment includes a review of nearby residential accommodation and Environmentally Sensitive Areas and calculation of the amount of vertical illuminance (measured in Lux) that they are likely to receive from the signage during night time operation.

The acceptable level of vertical illuminance will in part be determined by the night time lighting environment around the accommodation. AS4282 categorises the night time environment into different zones with maximum lighting limits as shown in Table 4 below:

TABLE 4 - AS4282 MAXIMUM VALUES OF VERTICAL ILLUMINANCE			
	Max Vertical Illuminance (lx)		Description
	Pre-curfew	Post-curfew	
A4	25	5	High district brightness e.g. Town and city centres and other commercial areas, residential areas abutting commercial areas, industrial and Port areas and Transport Interchanges
A3	10	2	Medium district brightness e.g. Suburban areas in towns and cities, generally roadways with streetlighting through suburban, rural or semi-rural areas
A2	5	1	Low district brightness e.g. Sparsely inhabited rural and semi-rural areas, generally roadways without streetlighting through suburban, rural or semi-rural areas other than intersections
A1	2	0.1	Dark e.g. Relatively uninhabited rural areas (including terrestrial, marine, aquatic and coastal areas), generally roadways without streetlighting through rural areas
A0	0	0	Intrinsically Dark e.g. UNESCO Starlight Reserve, IDA: Dark Sky Parks, Reserves or Sanctuaries, major optical observatories, other accreditations for dark sky places for example astrotourism, heritage value, astronomical importance, wildlife/ecosystem protection, lighting for safe access may be required

Residential Dwellings

Based on an assessment of the surrounding area, the nearest habitable windows with potential views to the signage are located at the following location/s:

Address	Zone
3 Great Western Hwy (Prospect Hotel Motel)	A3

As such, the accommodation above will form the focus of the illuminance assessment.

The existing signage lighting (and surrounding environment) was modeled in lighting calculation program AGI32 to determine the effect (if any) of the spill from the signage lighting. Photometric data for the luminaires was based off a floodlight from the same manufacturer with similar performance characteristics* and light baffles were also included in the calculations, as shown in Appendix D. The results of the calculations are shown in Appendix C.

Under AS4282, the maximum allowable illuminance to accommodation in Zone A3 is 2 lux (as outlined in Table 5). It can be seen from the lighting model that the maximum illuminance to accommodation in Zone A3 is 0.00 lux at 3 Great Western Hwy.

The existing signage lighting therefore complies with the relevant illuminance limits for nearby residential accommodation.

Environmentally Sensitive Areas

The following Environmentally Sensitive Area/s with potential views to the sign were also assessed:

Address	Zone
ESA- Girraween Creek	A3

It can be seen from the lighting model that the maximum illuminance to the Environmentally Sensitive Areas in Zone A4 is 0.36 lux at Girraween Creek. This illuminance level complies with the maximum AS4282 limit of 2 lux for Zone A3. There are no Environmentally Sensitive Areas identified in any other zones.

Threshold Increment Assessment

The Threshold Increment was also calculated for the inbound and outbound traffic approaches on Western Highway (M4), Clunies Ross St (northbound), and Clunies Ross St (southbound). The calculation grids were located at 1.5m above ground level, with a viewing distance of between 10m to 200m from the signage and a windscreen cutoff angle of 20 degrees (as outlined in AS1158). The calculation results show that the Threshold Increment does not exceed 7.80% for any traffic approach (the allowable maximum under the standard is 20%).

*Electrolight takes no responsibility for the accuracy of third party provided photometric data.

Upward Waste Light Assessment

In order to reduce light pollution and associated environmental impacts, AS4282 includes requirements that limit upward waste light into the night sky from signage. AS4282 states that externally illuminated signage shall have an Upward Waste Light Ratio (ULR_u) of not more than 0.03. The supplier shall ensure that baffles are installed, as outlined in Appendix D, to meet this requirement.

Luminous Intensity

AS4282 nominates Luminous Intensity limits where a light source (such as a floodlight) can be directly viewed from a residential accommodation or Environmentally Sensitive Area, shown in Table 5 below:

TABLE 5 - MAXIMUM LUMINOUS INTENSITIES PER LUMINAIRE FOR EXTERNALLY ILLUMINATED SIGNAGE			
Environmental Zone	Non-Curfew L1 luminous intensity (cd)	Non-Curfew L2 luminous intensity (cd)	Curfew luminous intensity (cd)
A0	As close to 0 as possible, without impacting safety	As close to 0 as possible, without impacting safety	0
A1	2500	5000	500
A2	7500	12500	1000
A3	12500	25000	2500
A4	25000	50000	2500

It can be seen from the lighting model that the maximum luminous intensity to dwellings in Zone A3 is 0 cd. The existing signage lighting therefore complies with the maximum Zone A3 AS4282 luminous intensity limit of 2500 cd for curfew operation.

AS4282 Assessment Summary

It can therefore be seen that the existing signage lighting complies with all relevant requirements of AS4282.

7. SEPP ASSESSMENT

Table 6 below outlines the illumination assessment criteria from the SEPP Industry and Employment Schedule 5 - Clause 7 Illumination. While the SEPP only applies to sites located on classified roads, this assessment references the guidelines for all sites as a best practice document in New South Wales. In addition to the criteria, responses have been included demonstrating that the existing signage is in compliance.

TABLE 6 - ILLUMINATION ASSESSMENT CRITERIA		
Assessment Criteria	Response	Compliant?
Would illumination result in unacceptable glare?	The existing signage complies with the Threshold Increment limits of AS4282, demonstrating that the illumination will not cause unacceptable glare.	✓
Would illumination affect safety for pedestrians, vehicles or aircraft?	The existing signage complies with the Threshold Increment limits of AS4282, demonstrating that the illumination will not cause unacceptable glare. The small size of the signage and its relatively low intensity limits the risk to pedestrians, vehicles or aircraft.	✓
Would illumination detract from the amenity of any residence or other form of accommodation?	The existing signage, when installed according to this report, complies with the illuminance (spill lighting) limits of AS4282, demonstrating that the illumination will not detract from the amenity of any residence or other form of accommodation	✓
Can the intensity of the illumination be adjusted, if necessary?	The existing signage is not dimmable, however due to the low luminance of the signage, dimming is not required.	N/A
Is the illumination subject to a curfew?	The existing advertising signage, when installed according to this report, complies with the limits required during curfewed operation under AS4282 (nominally between the hours of 11pm and 6am). This means that a curfew is not required.	N/A

8. SUMMARY

- The existing signage lighting at Clunies Ross St, Prospect NSW, shall not exceed the following maximum luminances:

LUMINANCE LEVELS FOR EXTERNALLY ILLUMINATED ADVERTISEMENTS		
Lighting Condition	Max Permissible Luminance (cd/m2)	Compliant
Day	N/A (OFF)	✓
Night Time	56	✓

- The existing signage lighting shall be fitted with baffles as shown in Appendix D in order to comply with the requirements outlined in this assessment.
- The existing signage lighting shall be aimed towards the signage face at 25 degrees from the horizontal in order to comply with the requirements outlined in this assessment.
- The existing signage lighting has been found to comply with all relevant requirements of AS4282, the Transport Guidelines and SEPP Industry and Employment.
- In complying with the above requirements, the existing signage lighting shall not result in unacceptable glare nor shall it adversely impact the safety of pedestrians, residents or vehicular traffic. Additionally, the existing signage lighting shall not cause any unacceptable amenity impacts to nearby residential accommodation or environmental receivers.

8. DESIGN CERTIFICATION

The existing signage lighting at Clunies Ross St, Prospect NSW, if commissioned according to this report, complies with the following criteria, guidelines and standards:

- State Environmental Planning Policy (Industry and Employment) 2021
- Transport Corridor Outdoor Advertising & Signage Guidelines 2017
- AS/NZS 4282:2023 Control of the Obtrusive Effects of Outdoor Lighting



Ryan Shamier MIES

M.Des.Sc(Illumination) B.Eng (Elec)

Member of the Illuminating Engineering Society of Australia and New Zealand (MIES)

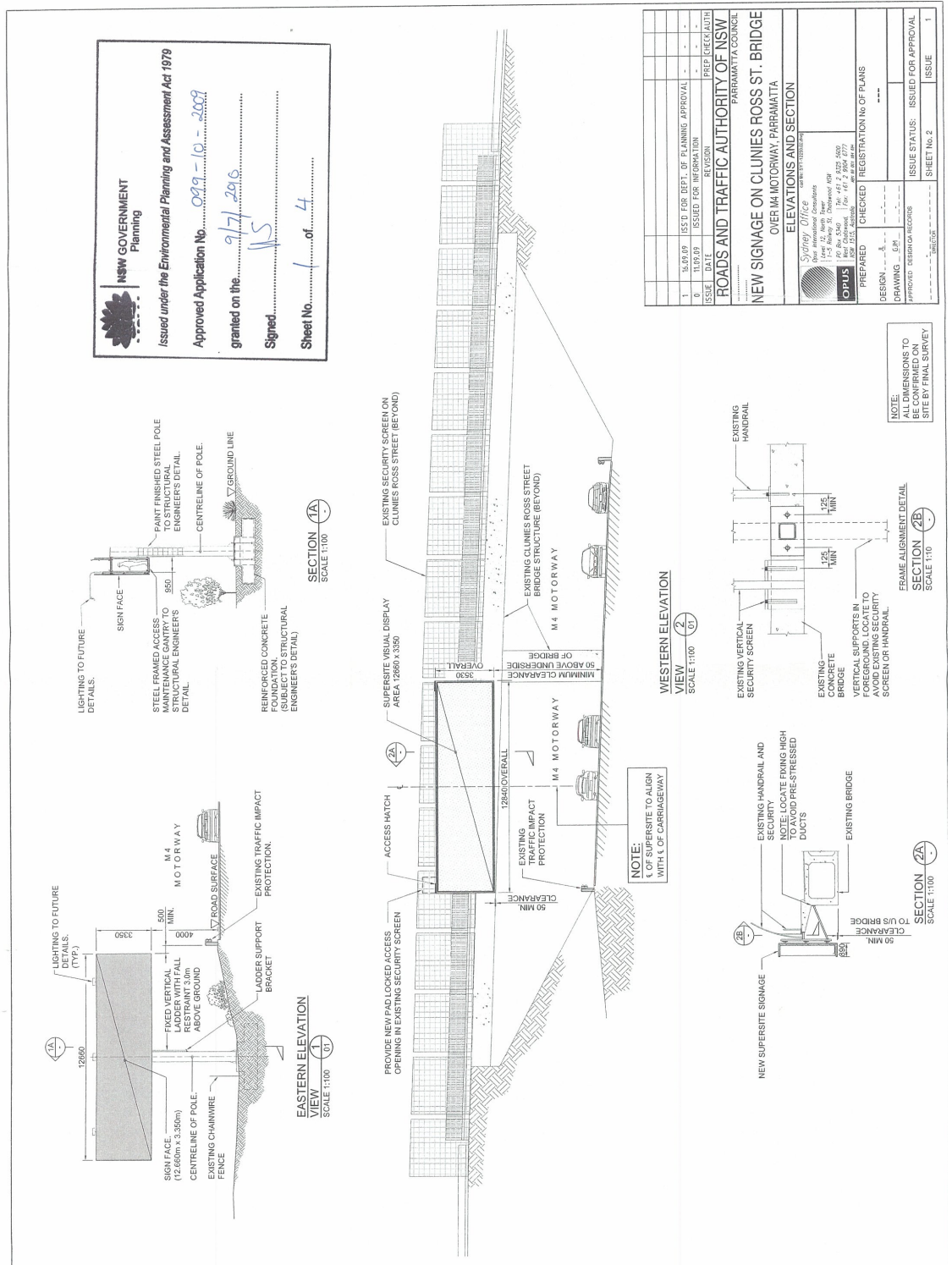
Registered Professional Engineer - New South Wales (PRE0000868)

Senior Lighting Designer

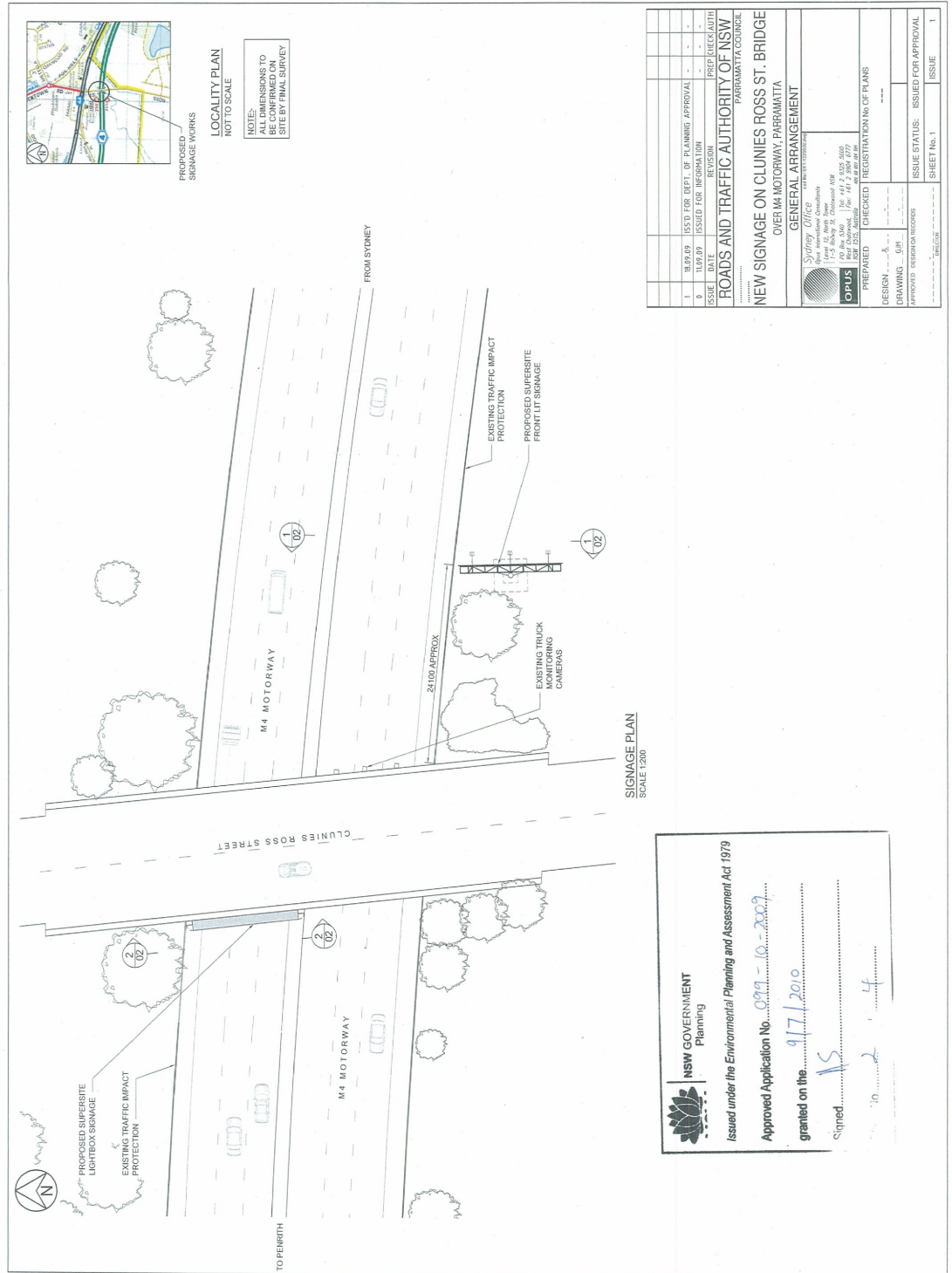
Electrolight Sydney

19/11/24

Existing SIGNAGE LOCATION AND ELEVATIONS



Existing SIGNAGE LOCATION AND ELEVATIONS



APPENDIX B

LUMINAIRE SPECIFICATION



TRADESTAR SE7169TC - 70/250W

A versatile LED floodlight range with five models ranging from 70 - 250 watt, now with selectable CCT.

Application

Perfect for any exterior space from residential small wattage designs through to high performance commercial applications






Design Specifications



- Integral LED control gear, non-dimmable 70, 100, 150, 200, 250 watt models
- Robust die-cast aluminium body profile with multi-function angled trunnion bracket, colour black
- Pre-wired with 1500mm UV rated flex for easy installation
- IK08, IP65 rated
- CRI >80, selectable CCT 3000/4000/5000K and an impressive 120lm/W optical performance at 4000K
- 100 degree wide beam distribution



Technical Specification

Product	Model No.	Input Voltage (V/AC)	Power (W)	Lumens (lm)	CCT (K)	CRI
	SE7169/70TC/BK	240	70	7350/8400/7700	3000/4000/5000	80
	SE7169/100TC/BK	240	100	10500/12000/11000	3000/4000/5000	80
	SE7169/150TC/BK	240	150	15750/18000/16500	3000/4000/5000	80
	SE7169/200TC/BK	240	200	21000/24000/22000	3000/4000/5000	80
	SE7169/250TC/BK	240	250	26250/30000/27500	3000/4000/5000	80

NSW/ACT: 02 9723 3099
QLD: 07 3879 5999
VIC/TAS/SA/NT: 03 9532 3168
WA: 08 9248 7458
www.sal.net.au

APPENDIX B

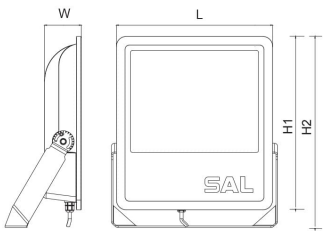
LUMINAIRE SPECIFICATION



Beam Angle (°)	Body Colour	Dim (mm)	Mass (kg)
100	Black	210(L) x 54(W) x 220(H)	2.2
100	Black	240(L) x 70(W) x 250(H)	3.3
100	Black	270(L) x 76(W) x 300(H)	4.3
100	Black	310(L) x 81(W) x 340(H)	5.6
100	Black	360(L) x 92(W) x 400(H)	7.9

Due to continued product and technology enhancements, data sourced from sal.net.au shall not form part of any contract and or technical performance guarantee unless expressly confirmed in writing by SAL at the time of order. Products are sold in accordance with [SAL Terms and Conditions of sale](#) and all images shown are for illustration purposes only and may vary from the actual colour or finish. Unless specifically stated, all IP ratings nominated for interior products are from "below the ceiling".

Dimensions

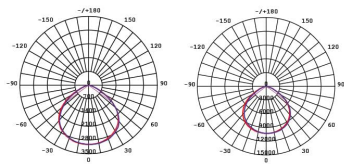


Photometric Data

Photometric Data

Unit: cd C0/C180 C90/C270

SE7169/70TC/BK at 5000K SE7169/250TC/BK at 5000K



APPENDIX C OBTRUSIVE LIGHTING CALCULATIONS

Environmental Zone Legend:

■ A0

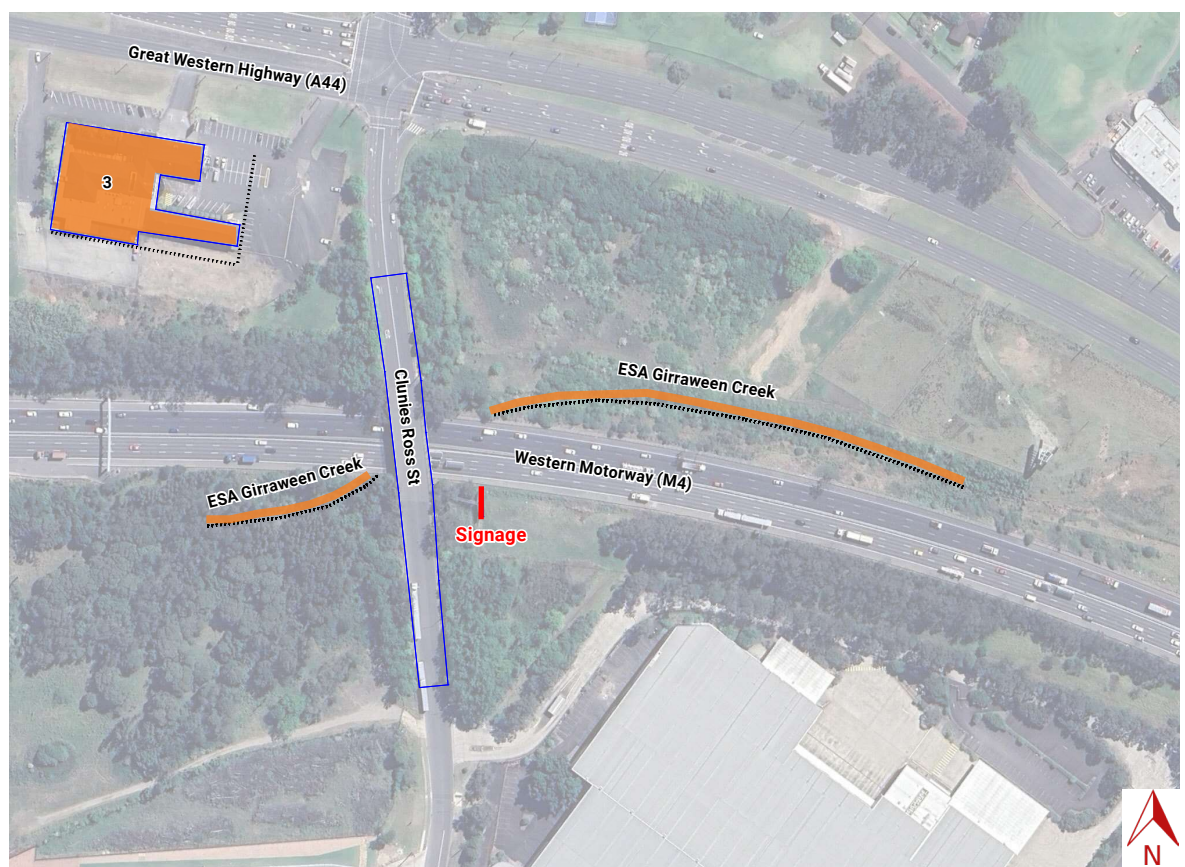
■ A1

■ A2

■ A3

■ A4

□ Property within 100m of
signage



APPENDIX C

OBTRUSIVE LIGHTING CALCULATIONS - DIRECT CONTRIBUTION FROM FLOODLIGHTS*

Calculation Summary			
Project: A3			
Label	CalcType	Units	Max
3 Great Western Hwy Cd Seg1	Obtrusive - Cd	N.A.	0.00
3 Great Western Hwy Cd Seg2	Obtrusive - Cd	N.A.	0.00
ESA Girraween Creek 1 Cd Seg1	Obtrusive - Cd	N.A.	0.00
ESA Girraween Creek 1 Cd Seg2	Obtrusive - Cd	N.A.	0.00
ESA Girraween Creek 1 Cd Seg3	Obtrusive - Cd	N.A.	0.00
ESA Girraween Creek 1 Cd Seg4	Obtrusive - Cd	N.A.	0.00
ESA Girraween Creek 1 Cd Seg5	Obtrusive - Cd	N.A.	0.00
ESA Girraween Creek 1 Cd Seg6	Obtrusive - Cd	N.A.	0.00
ESA Girraween Creek 1 Cd Seg7	Obtrusive - Cd	N.A.	0.00
ESA Girraween Creek Cd Seg1	Obtrusive - Cd	N.A.	0.00
ESA Girraween Creek Cd Seg2	Obtrusive - Cd	N.A.	0.00
ESA Girraween Creek Cd Seg3	Obtrusive - Cd	N.A.	0.00
ESA Girraween Creek Cd Seg4	Obtrusive - Cd	N.A.	0.00
3 Great Western Hwy I11 Seg1	Obtrusive - I11	Lux	0.00
3 Great Western Hwy I11 Seg2	Obtrusive - I11	Lux	0.00
ESA Girraween Creek 1 I11 Seg1	Obtrusive - I11	Lux	0.00
ESA Girraween Creek 1 I11 Seg2	Obtrusive - I11	Lux	0.00
ESA Girraween Creek 1 I11 Seg3	Obtrusive - I11	Lux	0.00
ESA Girraween Creek 1 I11 Seg4	Obtrusive - I11	Lux	0.00
ESA Girraween Creek 1 I11 Seg5	Obtrusive - I11	Lux	0.00
ESA Girraween Creek 1 I11 Seg6	Obtrusive - I11	Lux	0.00
ESA Girraween Creek 1 I11 Seg7	Obtrusive - I11	Lux	0.00
ESA Girraween Creek I11 Seg1	Obtrusive - I11	Lux	0.00
ESA Girraween Creek I11 Seg2	Obtrusive - I11	Lux	0.00
ESA Girraween Creek I11 Seg3	Obtrusive - I11	Lux	0.00
ESA Girraween Creek I11 Seg4	Obtrusive - I11	Lux	0.00

Calculation Summary			
Project: TI			
Label	CalcType	Units	Max
Clunies Ross St Northbound	Obtrusive - TI	%	0.00
Clunies Ross St Southbound	Obtrusive - TI	%	0.00
Western Motorway (M4) Inbound	Obtrusive - TI	%	0.00
Western Motorway (M4) Outbound	Obtrusive - TI	%	0.00

* The total illuminance shown in the report is a sum of the direct light from the floodlight and the indirect light reflected from the signage surface.

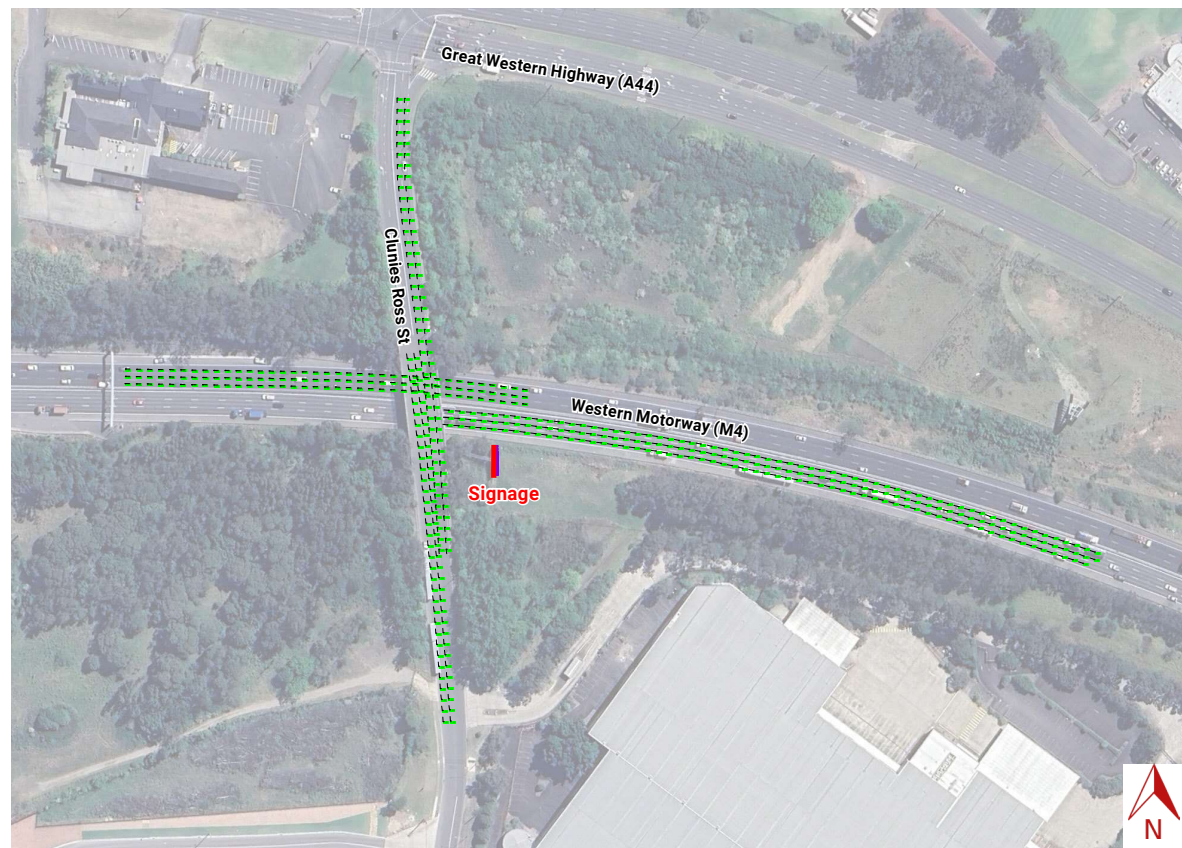
APPENDIX C

OBTRUSIVE LIGHTING CALCULATIONS - REFLECTED CONTRIBUTION FROM FLOODLIGHT OFF SIGNAGE SURFACE*

Calculation Summary			
Project: A3			
Label	CalcType	Units	Max
3 Great Western Hwy Ill Seg1	Obtrusive - Ill	Lux	0.00
3 Great Western Hwy Ill Seg2	Obtrusive - Ill	Lux	0.00
ESA Girraween Creek 1 Ill Seg1	Obtrusive - Ill	Lux	0.34
ESA Girraween Creek 1 Ill Seg2	Obtrusive - Ill	Lux	0.36
ESA Girraween Creek 1 Ill Seg3	Obtrusive - Ill	Lux	0.24
ESA Girraween Creek 1 Ill Seg4	Obtrusive - Ill	Lux	0.15
ESA Girraween Creek 1 Ill Seg5	Obtrusive - Ill	Lux	0.07
ESA Girraween Creek 1 Ill Seg6	Obtrusive - Ill	Lux	0.05
ESA Girraween Creek 1 Ill Seg7	Obtrusive - Ill	Lux	0.03
ESA Girraween Creek Ill Seg1	Obtrusive - Ill	Lux	0.00
ESA Girraween Creek Ill Seg2	Obtrusive - Ill	Lux	0.00
ESA Girraween Creek Ill Seg3	Obtrusive - Ill	Lux	0.02
ESA Girraween Creek Ill Seg4	Obtrusive - Ill	Lux	0.04

* The total illuminance shown in the report is a sum of the direct light from the floodlight and the indirect light reflected from the signage surface.

APPENDIX C
THRESHOLD INCREMENT CALCULATIONS



THRESHOLD INCREMENT CALCULATIONS - REFLECTED CONTRIBUTION
FROM FLOODLIGHT OFF SIGNAGE SURFACE*

Calculation Summary			
Project: TI			
Label	CalcType	Units	Max
Clunies Ross St Northbound	Obtrusive - TI	‰	0.00
Clunies Ross St Southbound	Obtrusive - TI	‰	0.00
Western Motorway (M4) Inbound	Obtrusive - TI	‰	0.00
Western Motorway (M4) Outbound	Obtrusive - TI	‰	7.80

* The total illuminance shown in the report is a sum of the direct light from the floodlight and the indirect light reflected from the signage surface.

APPENDIX C

OBTUSIVE AND THRESHOLD INCREMENT CALCULATIONS - Direct contribution from floodlights

Obtrusive Light - Compliance Report

AS/NZS 4282:2023, A3 - Medium District Brightness, Curfew

Filename: 3724.4 - Clunies Ross St - Direct calc for screen ave and lum intensity - modified angles - Rev A
14/11/2024 10:27:09 AM

Illuminance

Maximum Allowable Value: 2 Lux

Calculations Tested (13):

Calculation Label	Test Results	Max. Illum.
ESA Girraween Creek_III_Seg1	PASS	0.00
ESA Girraween Creek_III_Seg2	PASS	0.00
ESA Girraween Creek_III_Seg3	PASS	0.00
ESA Girraween Creek_III_Seg4	PASS	0.00
ESA Girraween Creek_1_III_Seg1	PASS	0.00
ESA Girraween Creek_1_III_Seg2	PASS	0.00
ESA Girraween Creek_1_III_Seg3	PASS	0.00
ESA Girraween Creek_1_III_Seg4	PASS	0.00
ESA Girraween Creek_1_III_Seg5	PASS	0.00
ESA Girraween Creek_1_III_Seg6	PASS	0.00
ESA Girraween Creek_1_III_Seg7	PASS	0.00
3 Great Western Hwy_III_Seg1	PASS	0.00
3 Great Western Hwy_III_Seg2	PASS	0.00

Luminous Intensity (Cd) At Vertical Planes

Maximum Allowable Value: 2500 Cd

Calculations Tested (13):

Calculation Label	Test Results
ESA Girraween Creek_Cd_Seg1	PASS
ESA Girraween Creek_Cd_Seg2	PASS
ESA Girraween Creek_Cd_Seg3	PASS
ESA Girraween Creek_Cd_Seg4	PASS
ESA Girraween Creek_1_Cd_Seg1	PASS
ESA Girraween Creek_1_Cd_Seg2	PASS
ESA Girraween Creek_1_Cd_Seg3	PASS
ESA Girraween Creek_1_Cd_Seg4	PASS
ESA Girraween Creek_1_Cd_Seg5	PASS
ESA Girraween Creek_1_Cd_Seg6	PASS
ESA Girraween Creek_1_Cd_Seg7	PASS
3 Great Western Hwy_Cd_Seg1	PASS
3 Great Western Hwy_Cd_Seg2	PASS

Threshold Increment (TI)

Maximum Allowable Value: 20 %

Calculations Tested (4):

Calculation Label	Adaptation Luminance	Test Results
Western Motorway (M4) Outbound	0.25	PASS
Clunies Ross St Northbound	1	PASS
Clunies Ross St Southbound	1	PASS
Western Motorway (M4) Inbound	0.25	PASS

Upward Waste Light Ratio (UWLR)

Maximum Allowable Value: 3.0 %

Calculated UWLR: 1.6 %

Test Results: **PASS**

APPENDIX C
OBTRUSIVE AND THRESHOLD INCREMENT CALCULATIONS - Reflected contribution from floodlights off signage surface

Obtrusive Light - Compliance Report

AS/NZS 4282:2023, A3 - Medium District Brightness, Curfew
Filename: 3724.4 - Clunies Ross St - Obtrusive full radiosity - Rev A
14/11/2024 10:27:56 AM

Illuminance

Maximum Allowable Value: 2 Lux

Calculations Tested (13):

Calculation Label	Test Results	Max. Illum.
3 Great Western Hwy_III_Seg1	PASS	0.00
3 Great Western Hwy_III_Seg2	PASS	0.00
ESA Girraween Creek_1_III_Seg1	PASS	0.34
ESA Girraween Creek_1_III_Seg2	PASS	0.36
ESA Girraween Creek_1_III_Seg3	PASS	0.24
ESA Girraween Creek_1_III_Seg4	PASS	0.15
ESA Girraween Creek_1_III_Seg5	PASS	0.07
ESA Girraween Creek_1_III_Seg6	PASS	0.05
ESA Girraween Creek_1_III_Seg7	PASS	0.03
ESA Girraween Creek_III_Seg1	PASS	0.00
ESA Girraween Creek_III_Seg2	PASS	0.00
ESA Girraween Creek_III_Seg3	PASS	0.02
ESA Girraween Creek_III_Seg4	PASS	0.04

Obtrusive Light - Compliance Report

AS/NZS 4282:2023, A3 - Medium District Brightness, Curfew
Filename: 3724.4 - Clunies Ross St - TI screen sim - Rev A
14/11/2024 10:39:20 AM

Threshold Increment (TI)

Maximum Allowable Value: 20 %

Calculations Tested (4):

Calculation Label	Adaptation Luminance	Test Results
Western Motorway (M4) Inbound	0.25	PASS
Western Motorway (M4) Outbound	0.25	PASS
Clunies Ross St Southbound	1	PASS
Clunies Ross St Northbound	1	PASS

APPENDIX D

LUMINAIRE BAFFLE DESIGN

